



FUTURES TRADING IS RISKY AND CAN CAUSE SUBSTANTIAL FINANCIAL LOSS

Trading Futures contains risk of loss and is not suitable for all types of investors. The information provided is meant for educational purposes only. There is no guarantee that you will profit from the information contained herein. This info is meant to be used as a tool in assisting you to arrive at your trading decisions. **PAST PERFORMANCE IS NOT NECESSARILY INDICATIVE OF FUTURE RESULTS. THERE IS NO REPRESENTATION BEING MADE THAT ANY ACCOUNT WILL ACHIEVE PROFITS OR LOSSES SIMILAR TO THOSE SHOWN HEREIN. THERE ARE OFTEN SHARP DIFFERENCES BETWEEN HYPOTHETICAL PERFORMANCE RESULTS AND ACTUAL RESULTS ACHIEVED BY ANY PARTICULAR TRADING PROGRAM.**

Copyright BGCTT Ltd. 2014.HK, USA. All rights reserved.

Parabolic SAR(0.02,0.02,0.2)



- (-)
- P +
- G (none)
- D -
- W +
- M +
- V +

Pivot Console

© eSignal, 2016

Stochastic(23(3),3)



(6E H18 - EURO-GLOBEX,800) 300 Bars,0:00-0:00 (Delayed)

Parabolic SAR(0.02,0.02,0.2)

O: 1.22060 H: 1.22085 L: 1.22025 C: 1.22040 **Net: -0.00130** EXPONENTIAL(9,7)

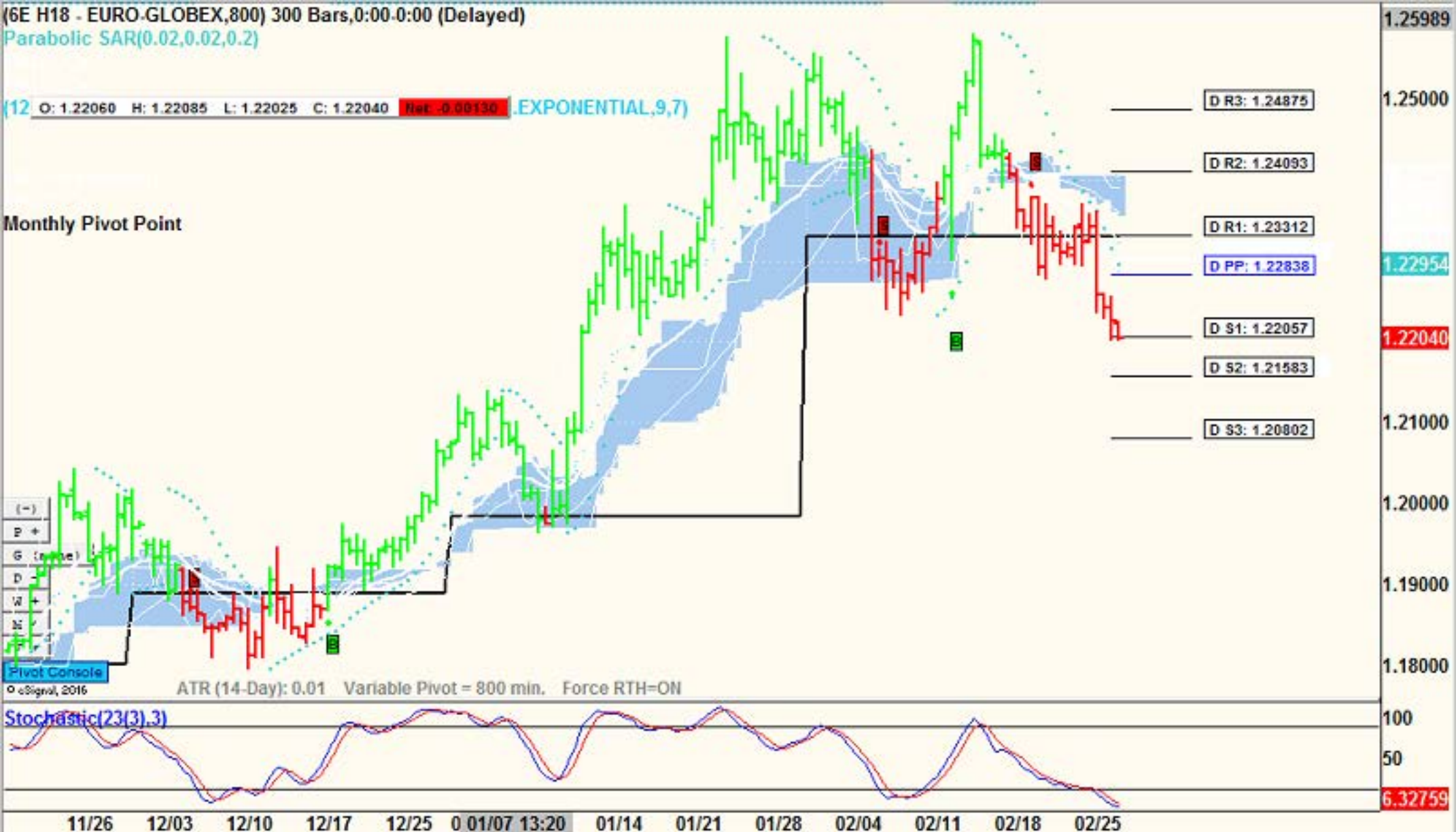
Monthly Pivot Point

(-)
P +
G (true)
D
W +
N
Pivot Console

©Signal, 2016

ATR (14-Day): 0.01 Variable Pivot = 800 min. Force RTH=ON

Stochastic(23(3).3)



1.25989

1.25000

1.22954

1.22040

1.21000

1.20000

1.19000

1.18000

100

50

6.32759

(6J H18 - JAPANESE YEN-GLOBEX,800) 300 Bars,0:00-0:00 (Delayed)

Parabolic SAR(0.02,0.02,0.2)

O: 0.93860 H: 0.93905 L: 0.93810 C: 0.93820 Net: 0.00040 EXPONENTIAL(9,7)

Monthly Pivot Point



(6B H18 - BRITISH POUND-GLOBEX,800) 300 Bars,0:00-0:00 (Delayed)

Parabolic SAR(0.02,0.02,0.2)

[12 O: 1.3760 H: 1.3766 L: 1.3759 C: 1.3760 **Net: -0.0018** Study:EXPONENTIAL,9,7)

Monthly Pivot Point

- (-)
- P +
- G (none)
- D -
- W +
- M
- V +

Console

© eSignal, 2016

ATR (14-Day): 0.01 Variable Pivot = 800 min. Force RTH=ON

Stochastic(23,3,3)

11/19 11/26 12/08 13:20 12/17 12/25 01/01 01/07 01/14 01/21 01/28 02/04 02/11 02/18 02/25

- D R3: 1.4147
- D R2: 1.4073
- D R1: 1.4000
- D PP: 1.3932
- D S1: 1.3859
- D S2: 1.3791
- D S3: 1.3718

1.4425
1.4300
1.4200
1.4100
1.4047
1.4000
.....
1.3800
1.3760
1.3700
1.3600
1.3500
1.3400
1.3300
1.3200
100
50
22.961
10.0543

(6S H18 - SWISS FRANC-GLOBEX,800) 300 Bars,0:00-0:00 (Delayed)

Parabolic SAR(0.02,0.02,0.2)

O: 1.0602 H: 1.0603 L: 1.0599 C: 1.0600 **Net: -0.0005** Study:EXPONENTIAL,9,7)

Monthly Pivot Point

- D R3: 1.0768
- D R2: 1.0734
- D R1: 1.0700
- D PP: 1.0667
- D S1: 1.0633
- D S2: 1.0600
- D S3: 1.0566

- (-)
- P +
- G (none)
- D -
- W +
- M +
- V +

ATR(14-Day) Variable Length = 800 min. Force RTH=ON

Stochastic(23,3,3)

11/20 00:00 1/26 12/03 12/10 12/17 12/25 01/01 01/07 01/14 01/21 01/28 02/04 02/11 02/18 02/25

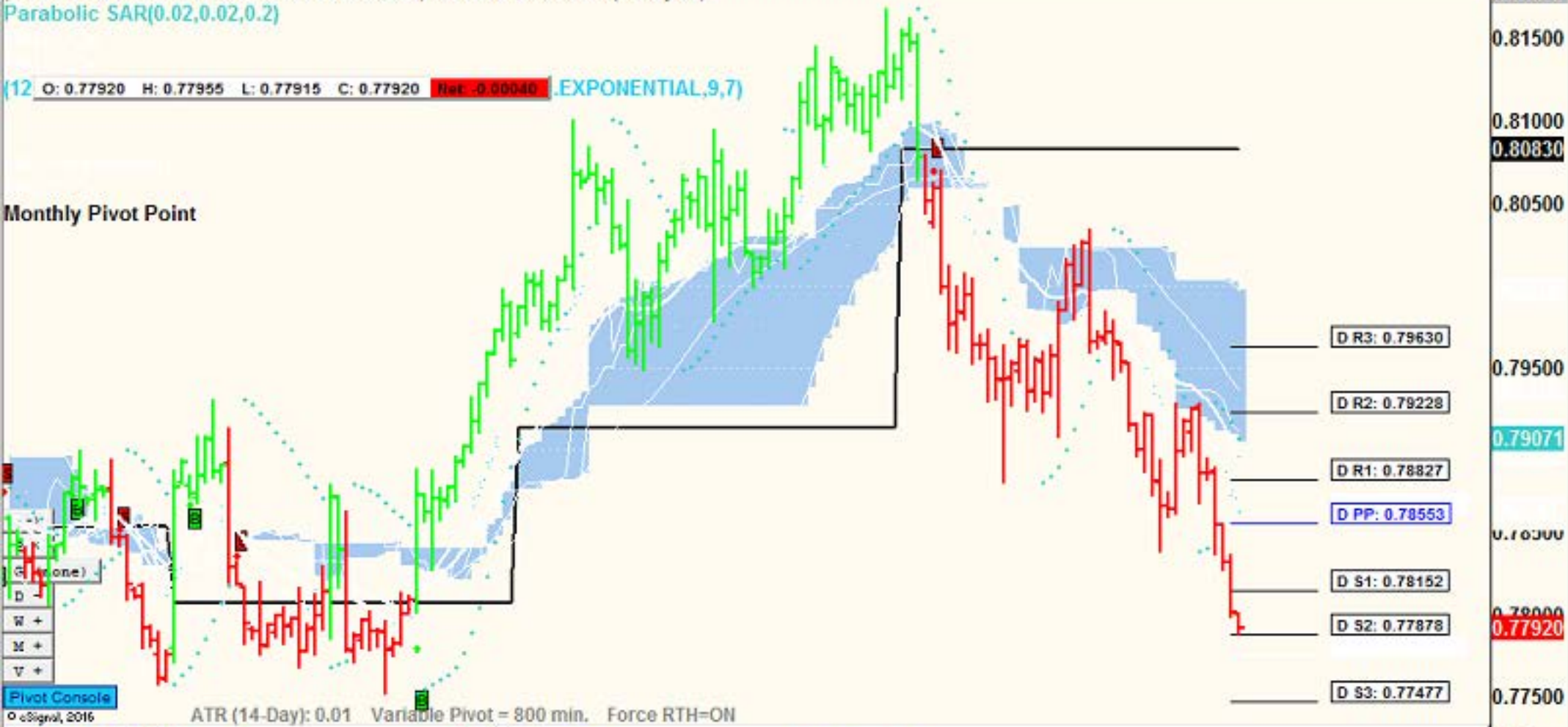
1.0940
1.0800
1.0669
1.0600
1.0500
1.0400
1.0300
1.0200
100
50
9.5145

(6C H18 - CANADIAN DOLLAR-GLOBEX,800) 300 Bars,0:00-0:00 (Delayed)

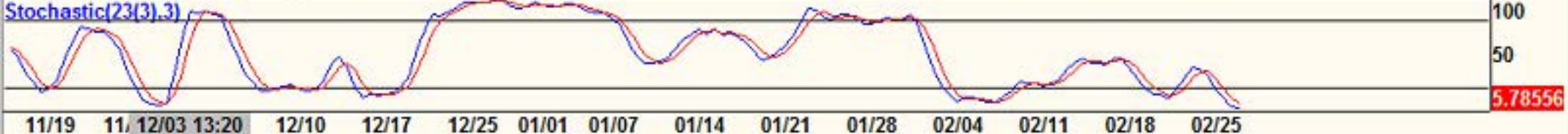
Parabolic SAR(0.02,0.02,0.2)

[12 O: 0.77920 H: 0.77955 L: 0.77915 C: 0.77920 Net: -0.00040 EXPONENTIAL,9,7)

Monthly Pivot Point



Stochastic(23(3),3)



(6A H18 - AUSTRALIAN DOLLAR-GLOBEX,800) 300 Bars,0:00-0:00 (Delayed)

Parabolic SAR(0.02,0.02,0.2)

[12 O: 0.7761 H: 0.7764 L: 0.7758 C: 0.7763 **Net: -0.0015** Study:EXPONENTIAL,9,7)

Monthly Pivot Point

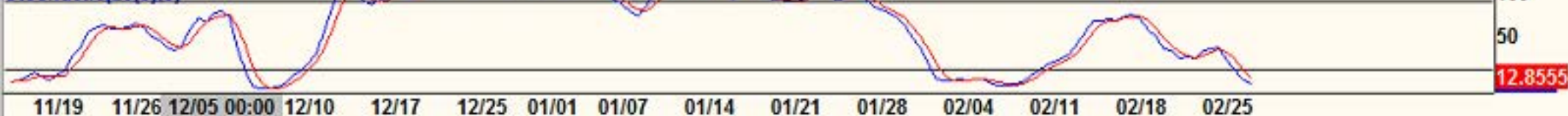
(-) P + G none D - S V +

Pivot Console

© eSignal, 2016

ATR (14-Day): 0.01 Variable Pivot = 800 min. Force RTH=ON

Stochastic(23,3,3)



D R3: 0.7953

D R2: 0.7901

D R1: 0.7848

D PP: 0.7816

D S1: 0.7763

D S2: 0.7731

D S3: 0.7678

0.8165
0.8100
0.8050
0.7993
0.7900
0.7869
0.7800
0.7750
0.7700
0.7650
0.7600
0.7550
0.7500
100
50
12.8555

(BTC H18 - BITCOIN,800) 300 Bars,0:00:0:00 (Delayed)

Parabolic SAR(0.02,0.02,0.2)

(12 O: 10450 H: 10450 L: 10250 C: 10290 Net: -355 Max Study: EXPONENTIAL,9,7)

Monthly Pivot Point

- (-)
- P +
- G (none)
- D -
- W +
- M +
- V +

Pivot Console

© eSignal, 2016

ATR (14-Day): 1131.38 Variable Pivot = 800 min. Force RTH=ON

Stochastic(23(3),3)

12/17 12/25 01/01 01/07 01/14 01/21 01/28 02/04 02/11 02/18 02/25

D R3: 11650
D R2: 11320
D R1: 10990
D PP: 10545
D S1: 10215
D S2: 9770
D S3: 9440

12055

10976

10290

9532

6000

100

62.76

0